

Erratum: Spectrum Map Construction Based on Optimized Sensor Selection and Adaptive Kriging Model

Zhiqing DING^{1,2}, Jianzhao ZHANG², Yongxiang LIU², Jie WANG¹, Guokai CHEN², Liming CAO¹

¹ Nanjing University of Information Science and Technology, Nanjing, China

² The Sixty-Third Research Institute, National University of Defense Technology, Nanjing, China

20201249259@nuist.edu.cn, jianzhao63s@nudt.edu.cn, lyx63s@163.com, 002915@nuist.edu.cn
 guokai.chen@nudt.edu.cn, 20201249250@nuist.edu.cn

Submitted May 20, 2022 / Accepted July 31, 2022 / Online first August 16, 2022 / Erratum March 15, 2023

In the published version of the paper, there is an error in Fig. 7. Figure 7 should be the results of different construction methods when "the standard deviation of shadow fading is 3 dB", but in the published version it is the result of different construction methods when "the standard deviation of shadow fading is 0 dB". The original version of Fig. 7 in the paper should be replaced with the corrected version of Fig. 7 as follows.

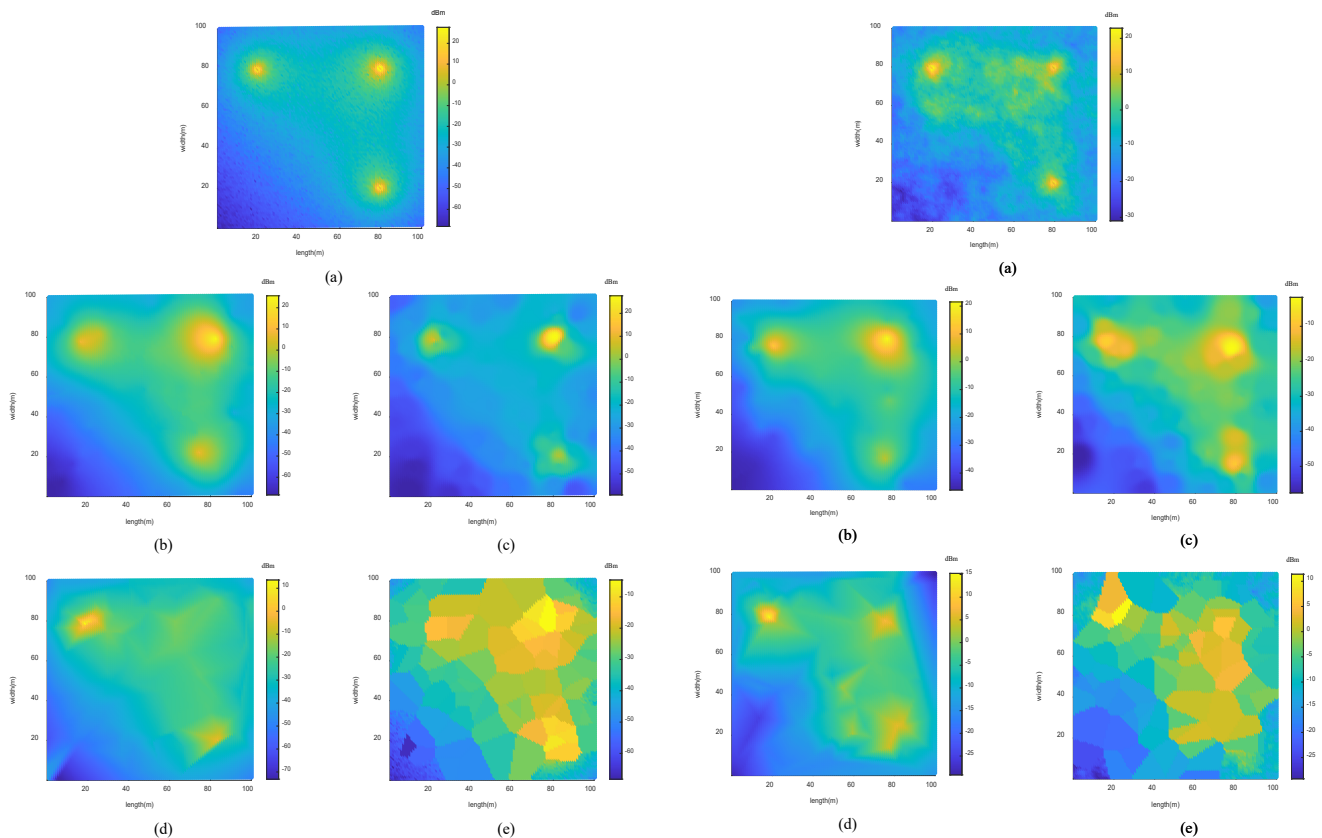


Fig. 7. Original version to be removed:
 (a) Original SM of simulation, (b) ABC-SA, (c) Random-IDW, (d) Random-Splines, (e) Random-NN.

Fig. 7. Corrected version to be inserted:
 (a) Original SM of simulation, (b) ABC-SA, (c) Random-IDW, (d) Random-Splines, (e) Random-NN.